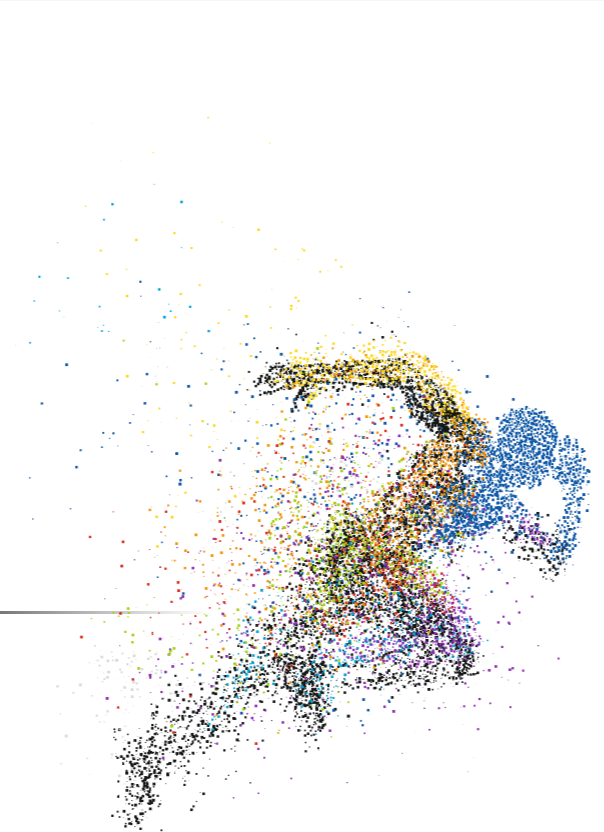
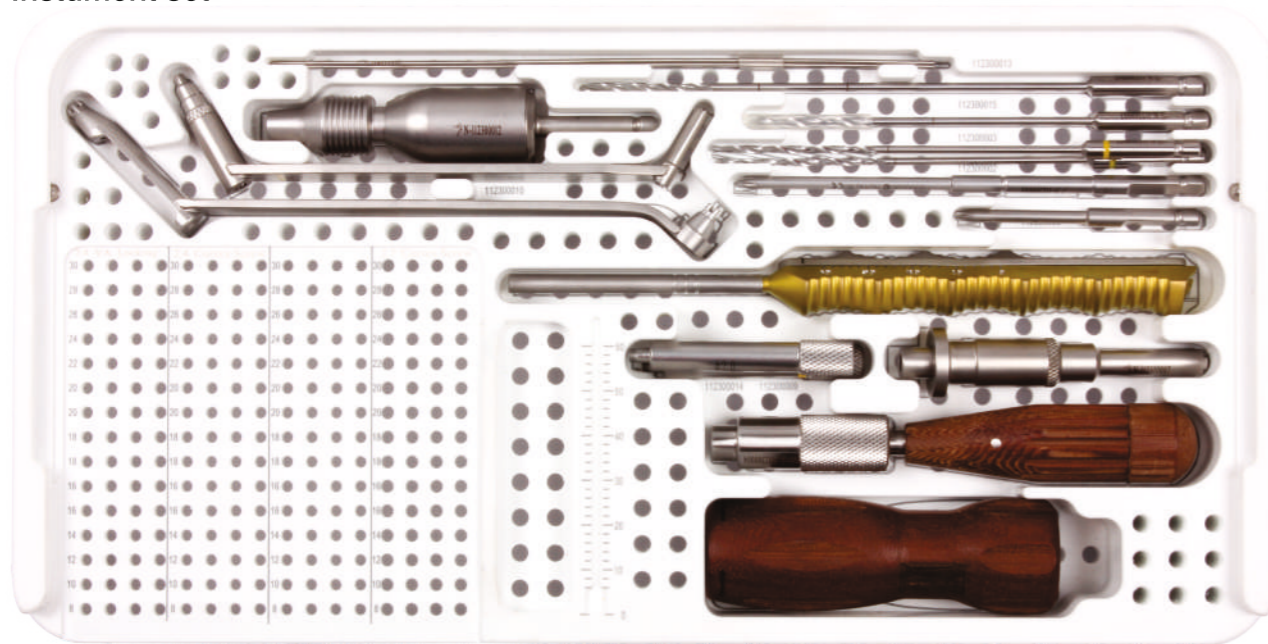


## VALP Distal Radius System



Instrument set



## VALP Distal Radius System

Two-Column & Extra-Articular Volar Plates



Options for fragments  
Specific fixation

Miraclus Orthotech Pvt. Ltd.

Plant address :  
Plot No. 1112, Phase-3, G.I.D.C., Vatva, Ahmedabad - 382 445.  
Phone : +91 79 2583 1332, 2583 1333  
Email : contact@miraclus.com | www.miraclus.com

Plant - II address:  
Survey no 106, village vavdi, opp safex industries  
Bh elite boarding school, vavdi, ta kheda-387550

# VALP Distal Radius System

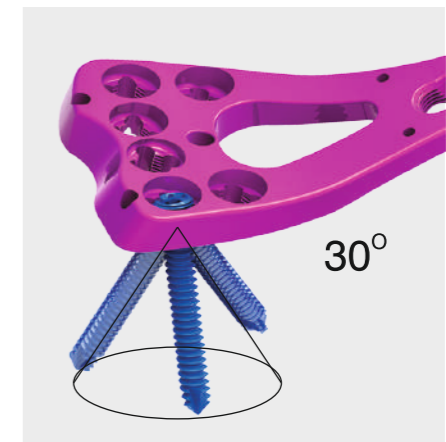
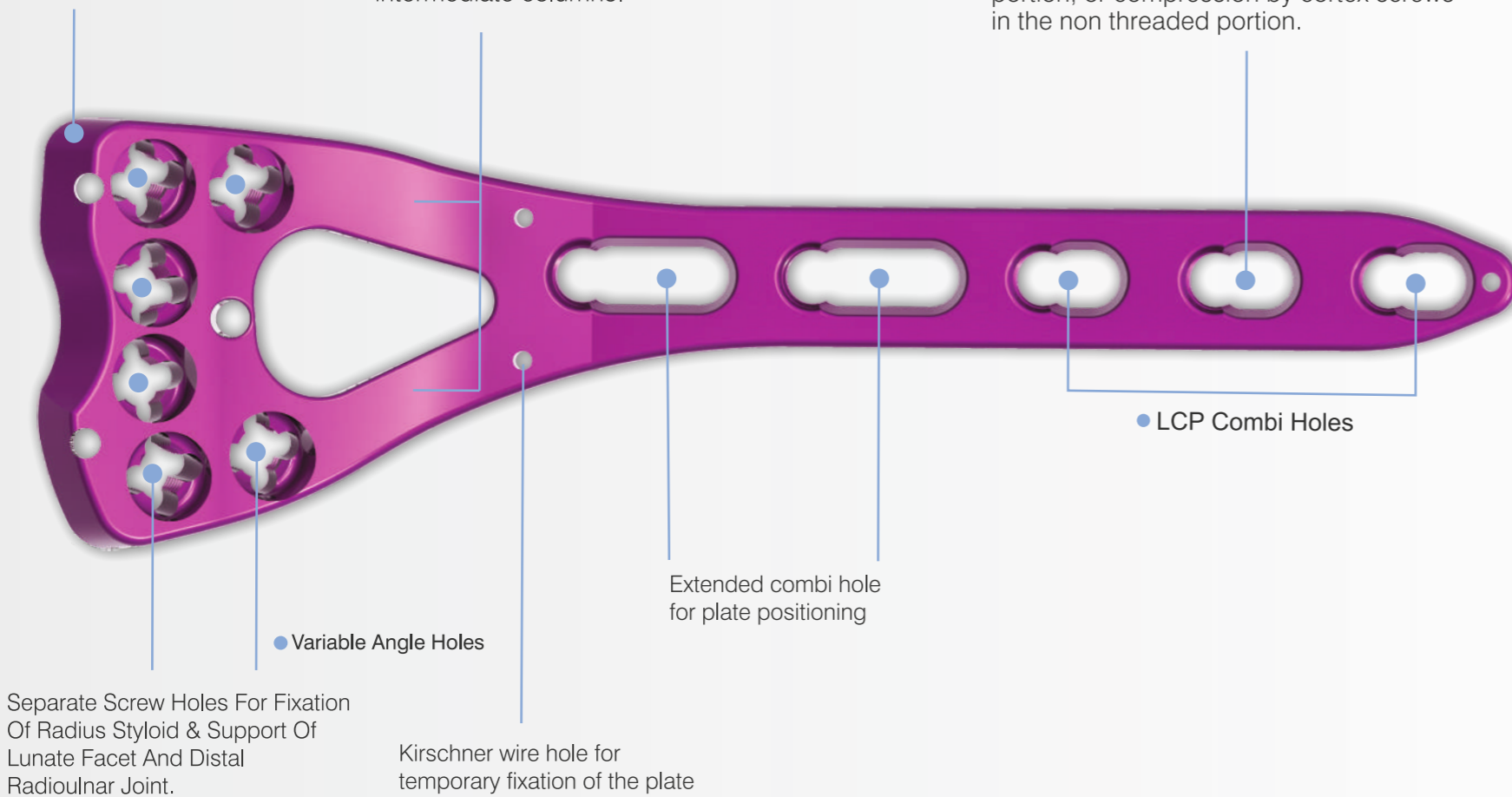
## Indication:

- Intra & Extra - articular fractures of the distal radius.
- Osteotomies of the distal radius.

Rounded edges to minimize soft tissue irritation.

Two columns allow independent fine contouring of the radial and intermediate columns.

Combi holes for fixed angle locking screw fixation with angular stability in the threaded portion, or compression by cortex screws in the non threaded portion.



- Variable Angle locking screw can be angled up to 30° cone around the central axis of the plate hole.



- Features:  
Four columns of threads in the locking hole provides locking at the four points between the plate & the variable angle locking screw at the desired screw angle.



- Round shape head of the 2.4 mm variable angle locking screw facilitates various angles within the locking hole.

## Two-Column Volar Plates

Standard



Wide



PT122.03.01

PT122.03.02

PT230.05.01

PT230.05.02

## Extra-Articular Volar Plates

Right Plates



Left Plates



PT121.43.01

PT121.55.01

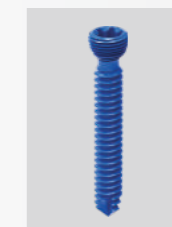
PT121.43.02

PT121.55.02

\* Various options are available in sizes and shape

## VALP - Screws

- | Self tapping design for easy insertion.
- | Screw lengths available from 12 mm to 30 mm.



2.4 mm Variable angle Locking Screw



2.4 mm Cortex Screw



2.7 mm Cortex Screw