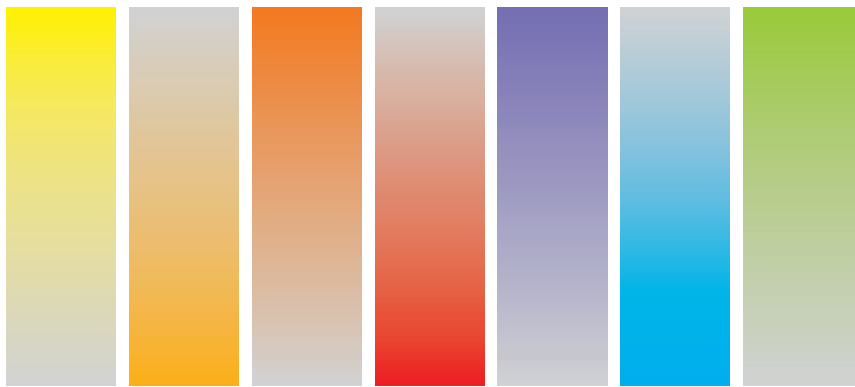


SPINE

Catalogue



MS-I™ Spinal Fixation System

The Low Profile, top-loading, self tapping Pedicle screw system.



Mono and Poly Screw

Screw	Screw Length (mm)						
	25 mm	30 mm	35 mm	40 mm	45 mm	50 mm	55 mm
4.5 mm	•	•	•				
5.5 mm		•	•	•	•	•	
6.2 mm		•	•	•	•	•	•
7.0 mm		•	•	•	•	•	•



Poly Screw Angle 52°

Easily accommodates anatomical variations

- Greater Angulation make construct assembly simple.
- Greater flexibility in screw placement.



- Ø 5.7 mm Rod Compatible with laser marked contour lines.



- Adjustable Length as per desire construct.
- Adjust to the rod in Various orientation.



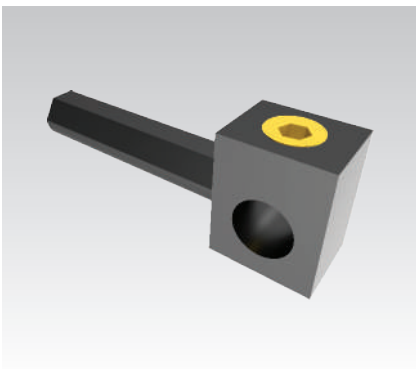
Reduction Screw

Screw	Screw Length (mm)					
Diameter	25 mm	30 mm	35 mm	40 mm	45 mm	50 mm
4.5 mm	•	•	•			
5.5 mm			•	•	•	•
6.2 mm			•	•	•	•
7.0 mm			•	•	•	



Iliac Screw

Screw	Screw Length (mm)						
Diameter	65 mm	70 mm	75 mm	80 mm	85 mm	90 mm	95 mm
5.5 mm	•	•	•	•	•	•	•
6.2 mm	•	•	•	•	•	•	•



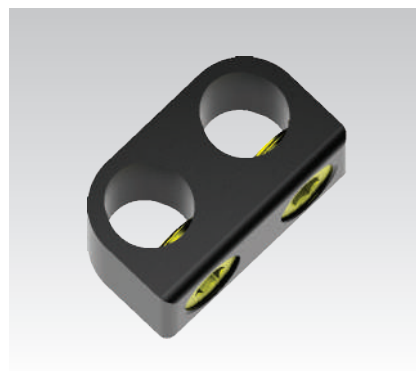
Lateral Connector

Length (mm)	15, 20, 25
-------------	------------



Inner :

Buttress thread inner helps reducing cross threading and head splay

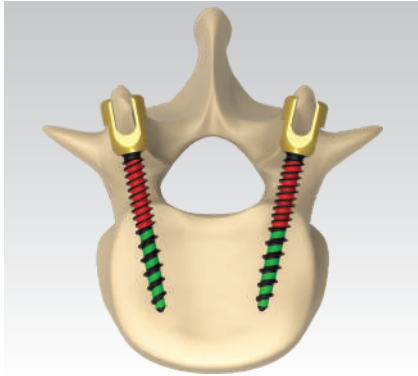


Domino connector :

Size : Ø 5.7 - Ø 5.7mm

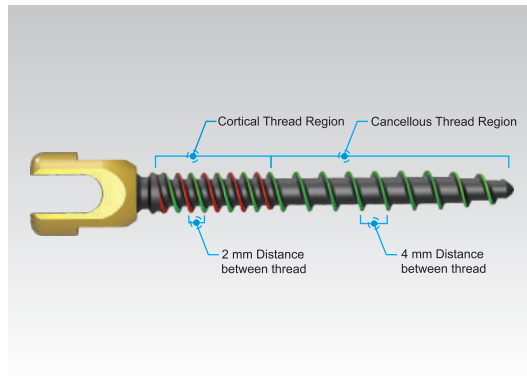
MS-II™ Spinal Fixation System

The Dual Lead, top-loading, Pedicle screw system.

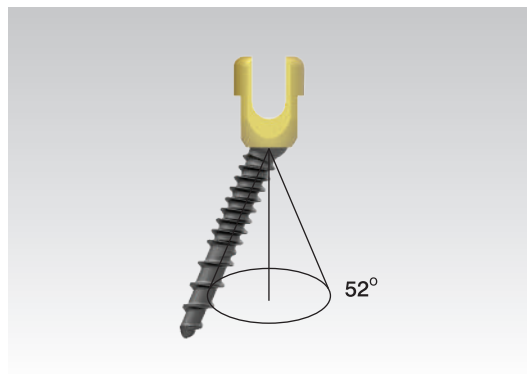


Size Chart :

Screw	Screw Length (mm)						
	25 mm	30 mm	35 mm	40 mm	45 mm	50 mm	55 mm
4.5 mm	•	•	•				
5.5 mm			•	•	•	•	
6.2 mm			•	•	•	•	•
7.0 mm			•	•	•	•	•



- Dual Lead enables Secure Anchorage in cortical and cancellous bone.
- Dual thread pattern ensures pull-out strength.



- 52° Angulation of poly screw.



- Colour coding implant for easy identification.



MIS Poly Axial Pedicle Screw

Screw	Screw Length (mm)			
Diameter	35 mm	40 mm	45 mm	50 mm
5.5 mm	•	•	•	•
6.5 mm	•	•	•	•



MIS Contoured Rod

Length (mm)	30 to 155 (5 mm increment)
-------------	----------------------------



MIS inner

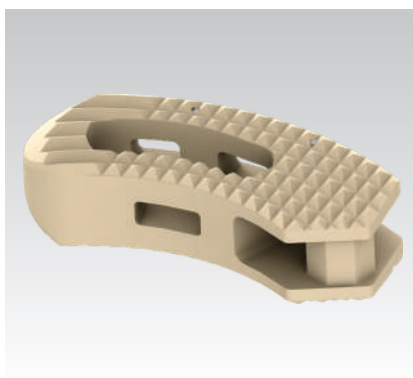
ALC-II™ Tlif Cage

Comprehensive system for Transforaminal Lumbar Interbody fusion

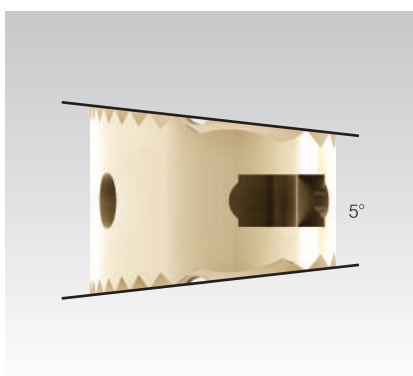


Sizes :

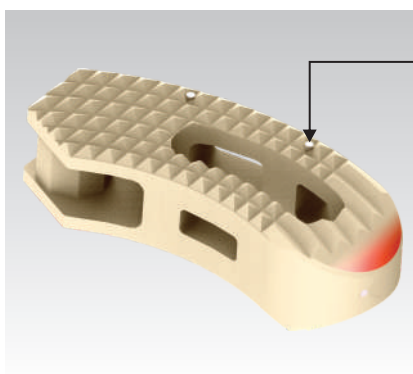
Material	Width	Height (mm)
PEEK	28	7, 8, 9, 10, 11, 12, 13, 14
Titanium	28	7, 8, 9, 10, 11, 12, 13, 14



- Large graft area allows substantial bone growth
- Anterior & posterior side holes enables graft vascularization



- **Lordotic angle 5°**
(except for the 7 mm height)

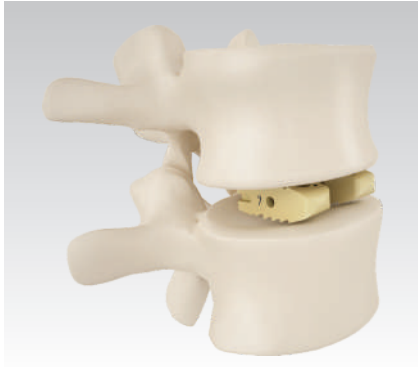


Tantalum marker for clear radiographic implant placement

- Tapered tip facilitates easy insertion.

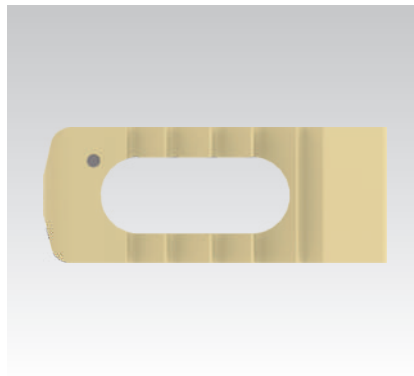
ALC™ -Plif Cage

PLIF Cages from Radiolucent, Bio-compatible PEEK material.



Sizes :

Material	Degree	Width	Height (mm)
PEEK	0°	22 / 26	7, 8, 9, 10, 11, 12, 13, 14
Titanium	0°	22 / 26	7, 8, 9, 10, 11, 12, 13, 14



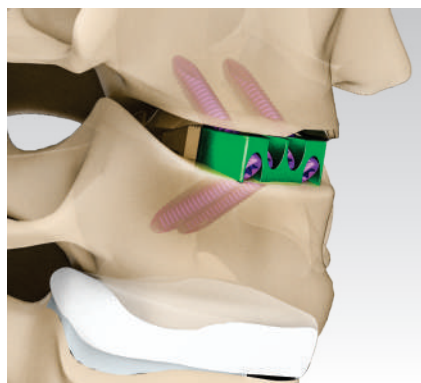
- Toothed upper & lower surfaces for better anchoring.

CTL™ Mesh Cage System



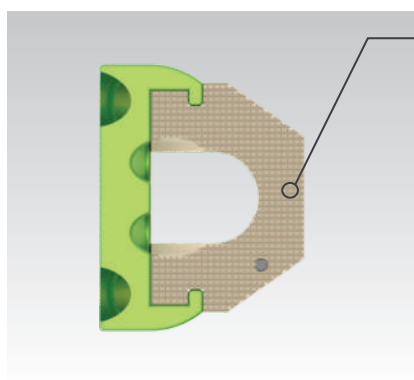
Sizes :

Diameter (mm)	Length (mm)										
	15 mm	20 mm	25 mm	30 mm	35 mm	40 mm	45 mm	50 mm	60 mm	70 mm	100 mm
10	•	•	•	•	•			•	•	•	•
12	•	•	•	•	•	•					•
14		•	•	•	•	•	•				
16			•	•	•	•	•				



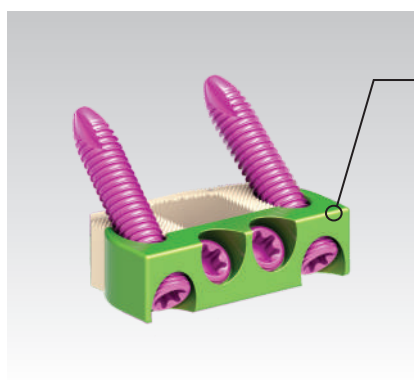
Sizes :

Description	Height (mm)
Stand Alone Cage - Peek & Titanium	5, 6, 7, 8, 9, 10, 11, 12
Stand Alone Cage - Titanium	5, 6, 7, 8, 9, 10, 11, 12
Stand Alone 3.0mm Screw	12, 14, 16



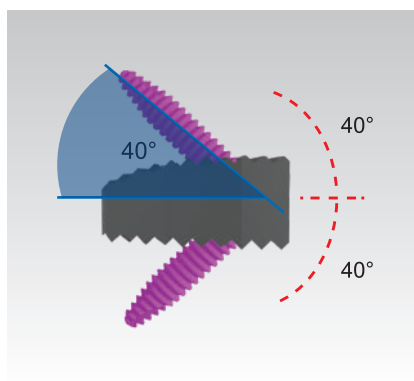
PEEK Interbody Spacer

- Radiopaque marker for posterior visualization during imaging.
- Spacer components is made of pure medical grade PEEK- (polyetheretherketone).
- Teeth on the superior and inferior implant surfaces provides primary stability.



Titanium Alloy Plate

- Provides a secure and rigid screw locking interface.
- The Innovative interface between plate and spacer separates stresses of the plate and spacer.

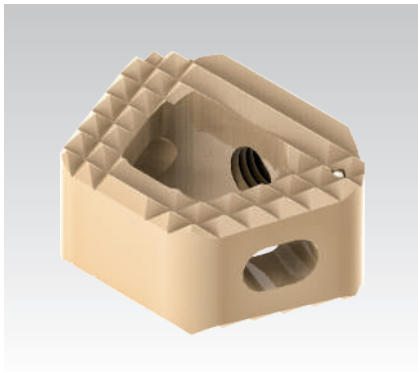


Locking Screw

- 3.0 mm Titanium Locking Screw form a bone wedge with a $40^{\circ} \pm 5^{\circ}$ cranial/caudal angle and 2.5° medial/lateral angle.
- Dual lead, Self-Tapping Screw improves thread purchase.

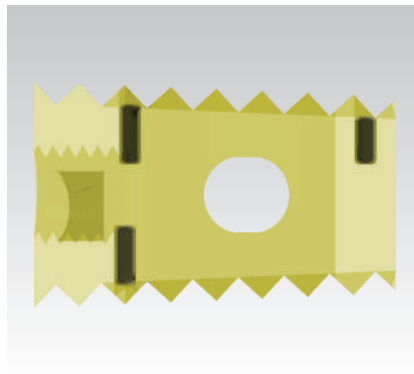
ACC™ System Anatomical Cervical Cage System

Cervical cages from Radiolucent, Bio-compatible PEEK material.



Sizes :

Material	Width	Height (mm)
PEEK	14	4, 5, 6, 7, 8
	16	4, 5, 6, 7, 8
Titanium	14	4, 5, 6, 7, 8
	16	4, 5, 6, 7, 8



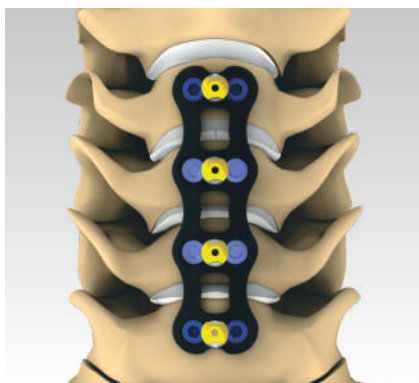
- X-ray markers allows 3D-Visualization and radiological Identification.



- Large grafting area to optimize bone fusion.

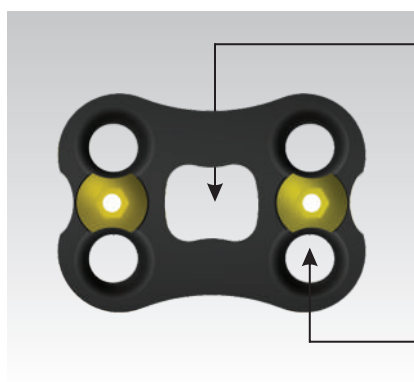


- Implant teeth reduces likelihood of migration in any direction.



Sizes :

Material	Level	Length (mm)
Titanium Alloy	I	19, 21, 23, 25, 27.5, 30, 32.5
	II	35, 37.5, 40, 42.5, 45, 47.5, 50
	III	52.5, 55, 57.5, 60, 62.5, 65, 67.5, 70, 72.5



Adequate window for graft visibility.

Integrated Locking Mechanism.



- Integrated locking mechanism enabled with ¼ twist of a driver prevents screw backing out.



Self- Drilling, Self Tapping Screws

- Reduces the need for intra-operative surgical steps.

Sizes :

Description	Height (mm)
4.0 mm Cervical Screw	11, 13, 15, 17, 19
4.5 mm Cervical Revision Screw	11, 13, 15, 17, 19

PCF™ Posterior Cervical Fixation System

Top-loading, Self Tapping Poly Screw



Sizes :

Diameter (mm)	Length (mm)
3.5	10 to 32 (2 mm Increment)
4.0	10 to 32 (2 mm Increment)
4.0 (partially Threaded)	26 to 40 (2 mm Increment)



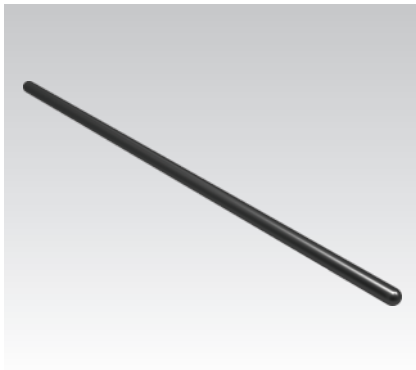
- Thread pattern of Poly Axial Screw provide maximum pull out strength.
- Colour coding implant for identification.



- Low profile Occipital Plate Accommodate 3.5 mm rod.

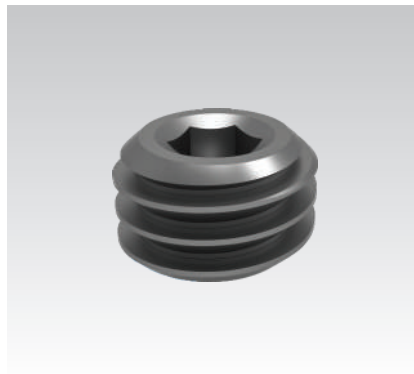
PCF™ Posterior Cervical Fixation System

Top-loading, Self Tapping Poly Screw



3.5 Posterior Cervical Rods

Length (mm)	120, 220
-------------	----------



- Posterior cervical inner

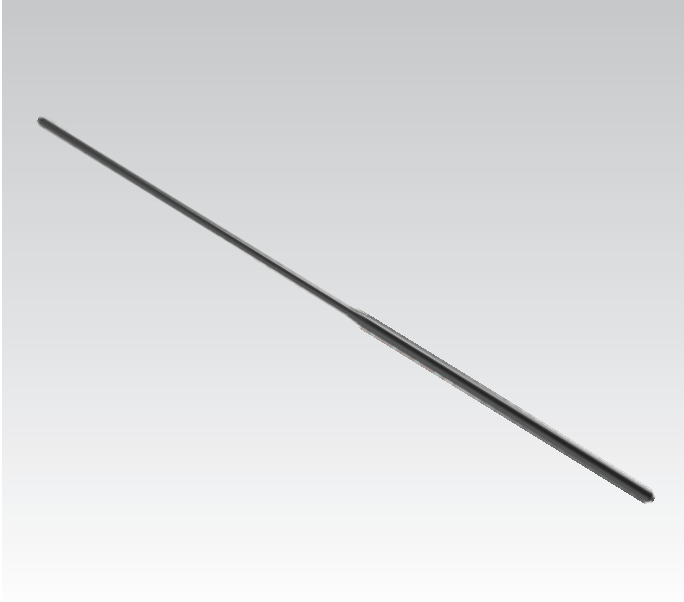


- Cross link provides significant stability of a bilateral rod construct.



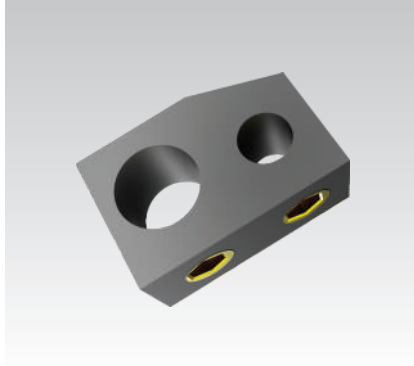
Occipital Plate Screw

Diameter (mm)	Screw Length (mm)
3.5	6 to 18 (2 mm Increment)
4.0	6 to 18 (2 mm Increment)

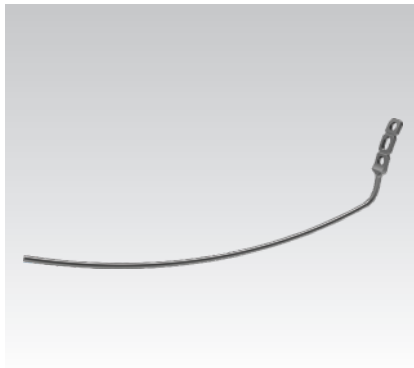


Ø 3.5 - 5.7 Tapper Rod

Total Length (mm)	Ø 3.5 Length (mm)	Ø 5.7 Length (mm)
200	100	100
275	125	150
300	150	150



- **Domino connector:**
Ø3.5-Ø5.7 mm



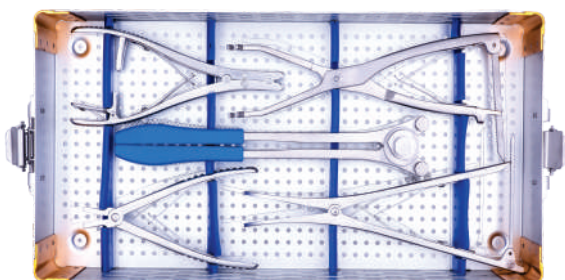
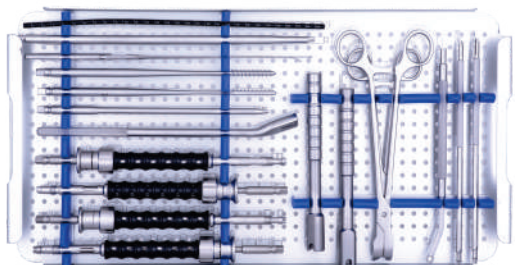
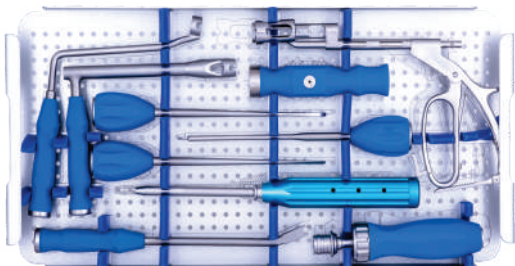
Occipital Plate Rods

Length (mm)	100, 200
-------------	----------

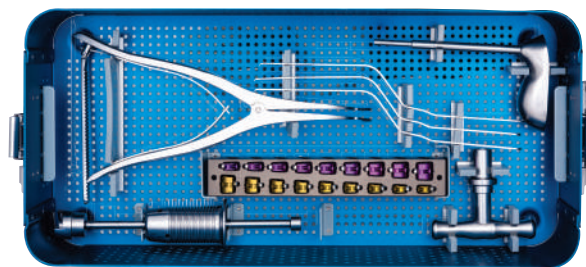
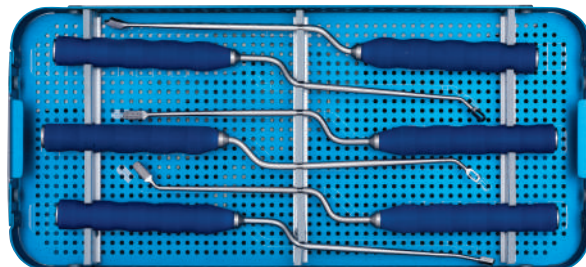
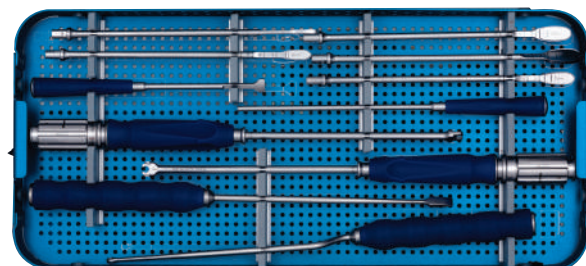
SPINE *Instruments sets*



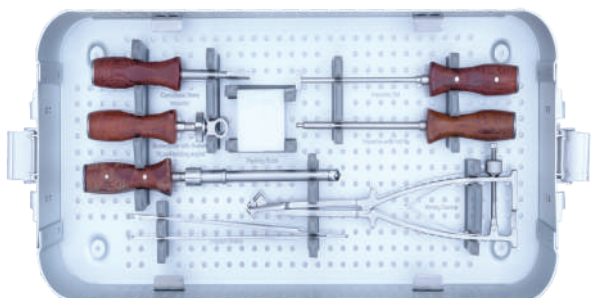
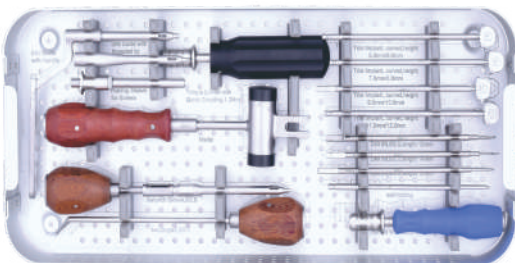
MS-I & MS-II Instruments



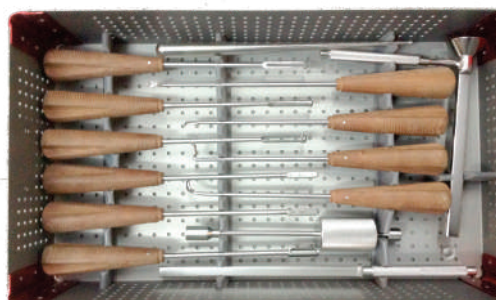
ALC - Tilif Cage Instruments



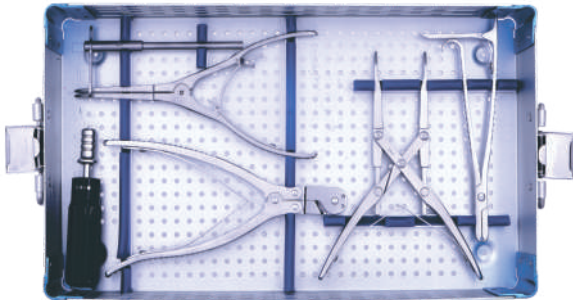
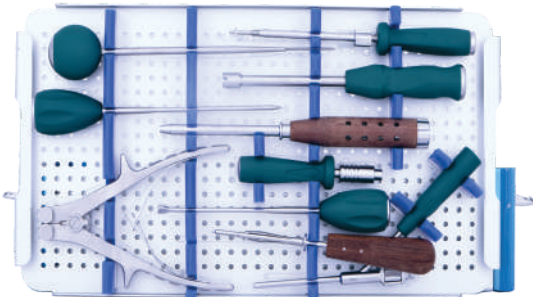
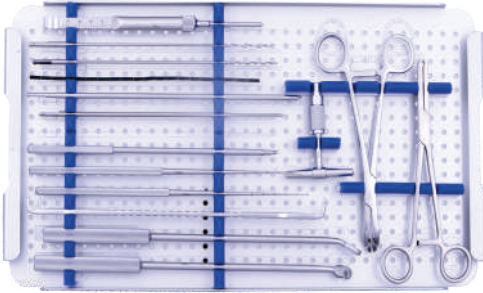
ACC - Stand Alone Implant Instruments



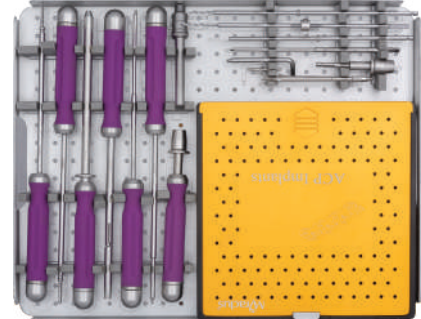
ALC - Plif Cage Instruments



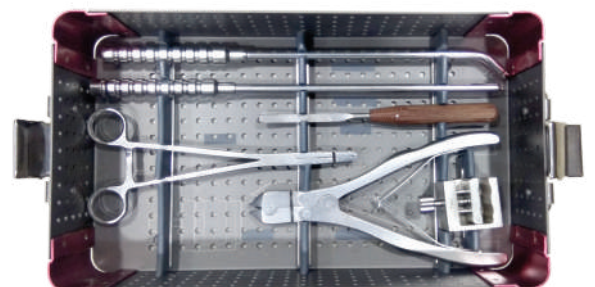
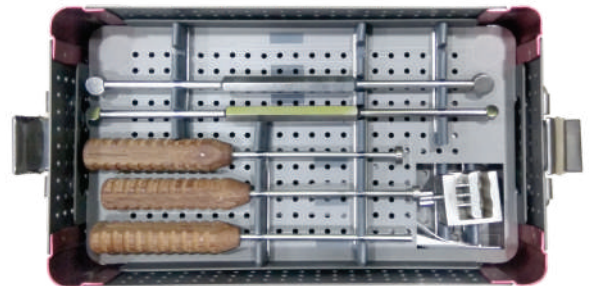
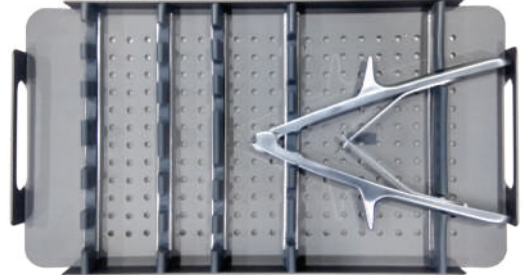
PCF Instruments



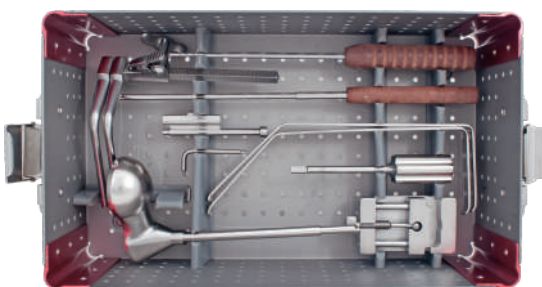
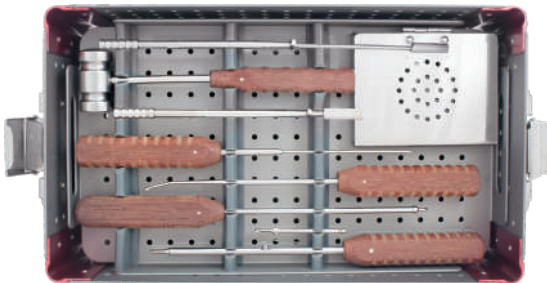
ACP System Instruments



CTL Mesh Cage Instruments



ACC System Instruments



SPINE

Catalogue



Miraclus Orthotech Pvt. Ltd.

Plant -I :
Plot No. 1112, Phase-3, G.I.D.C., Vatva, Ahmedabad - 382 445.
Phone : +91 79 2583 1332, 2583 1333
Email : contact@miraclus.com | www.miraclus.com

Plant -II :
Survey No. 106, Village Vavdi, Opp. Safex Industries,
Behind Elite Boarding School, Vavdi,
Ta. Kheda-387550, Gujarat, India