

3.5 Pelvic Plating System



3.5 Pelvic curve plate

PS109.06 6 Holes	PS109.10 10 Holes	PS109.14 14 Holes
PS109.08 8 Holes	PS109.12 12 Holes	



Indication:

Fracture fixation of following pelvic bone region,

- Acetabulum
- Pelvic ring
- Sacrum
- Ilium
- Sacroiliac joint
- Symphysis pubis

Features:

- Various design precontoured plates. i.e. straight, curved & J-plates.
- 316 LVM SS malleable plates.
- Low profile and rounded edge plates.

Benefits:

- Comprehensive coverage for difficult anatomy of pelvic region.
- Excellent plate malleability leads to optimum adaptability.
- Prevents soft tissue irritation.

3.5 Pelvic straight plate

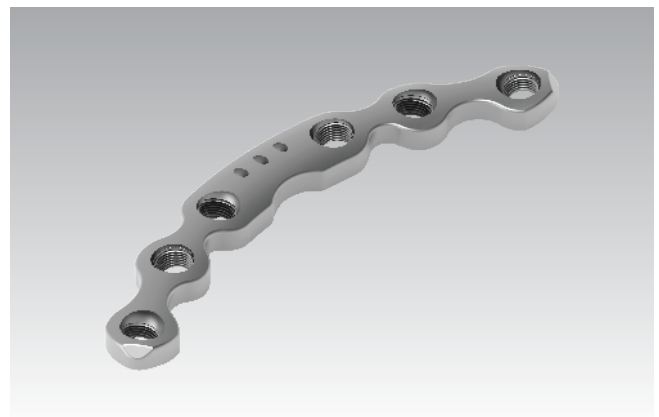
PS110.03 3 Holes	PS110.07 7 Holes	PS110.11 11 Holes
PS110.04 4 Holes	PS110.08 8 Holes	PS110.12 12 Holes
PS110.05 5 Holes	PS110.09 9 Holes	PS110.13 13 Holes
PS110.06 6 Holes	PS110.10 10 Holes	PS110.14 14 Holes

3.5 Pelvic Plating System



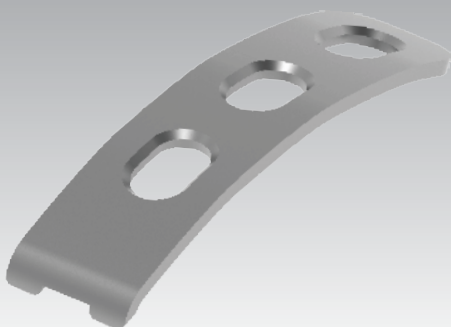
3.5 Pelvic J plate

PS116.10.01 Right angled, 10 Holes	PS116.10.02 Left angled, 10 Holes
PS116.12.01 Right angled, 12 Holes	PS116.12.02 Left angled, 12 Holes
PS116.14.01 Right angled, 14 Holes	PS116.14.02 Left angled, 14 Holes
PS116.16.01 Right angled, 16 Holes	PS116.16.02 Left angled, 16 Holes



3.5 Pelvic symphyseal plate

PS160.04 4 Holes	PS160.06 6 Holes
-----------------------	-----------------------



3.5 Pelvic spring plate

PS161.01 1 Holes	PS161.02 2 Holes	PS161.03 3 Holes
-----------------------	-----------------------	-----------------------

