

# PCF™ -Posterior Cervical Fixation System



## Sizes :

Diameter (mm)	Length (mm)
3.5	10 to 32 (2 mm Increment)
4.0	10 to 32 (2 mm Increment)
4.0 (partially Threaded)	26 to 40 (2 mm Increment)



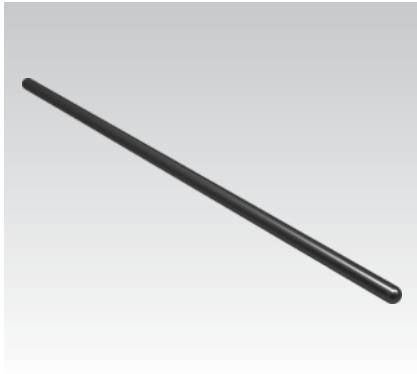
- Thread pattern of Poly Axial Screw provide maximum pull out strength.
- Colour coding implant for identification.



- Low profile Occipital Plate Accommodate 3.5 mm rod.

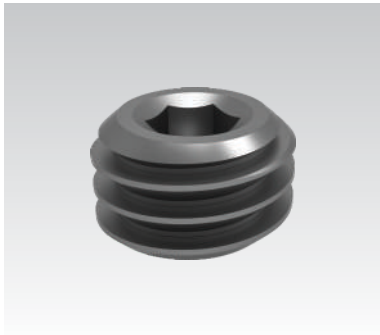


# PCF™ -Posterior Cervical Fixation System



## 3.5 Posterior Cervical Rods

Length (mm)	120, 220
-------------	----------



- Posterior cervical inner



- Cross link provides significant stability of a bilateral rod construct.



## Occipital Plate Screw

Diameter (mm)	Screw Length (mm)
3.5	6 to 18 (2 mm Increment)
4.0	6 to 18 (2 mm Increment)

