

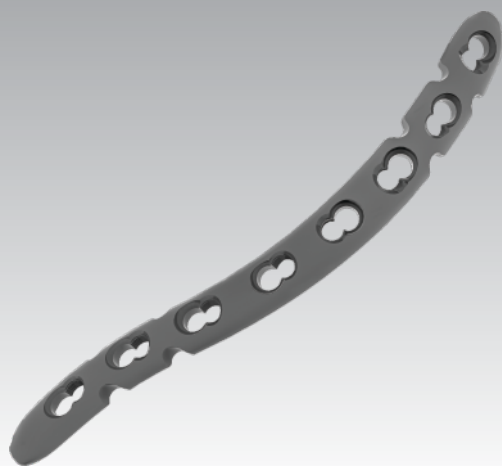


ASLP

Humerus and Clavical Plating System



ASLP™ -3.5 Clavicle Plating System



ASLP-3.5 mm superior anterior clavicle plates

PT103.06.01 Right angled Holes 6	PT103.06.02 Left angled Holes 6
PT103.07.01 Right angled Holes 7	PT103.07.02 Left angled Holes 7
PT103.08.01 Right angled Holes 8	PT103.08.02 Left angled Holes 8

Indication:

- Intended use for fixation of clavicle bone.
- Osteotomies of the clavicle bone.
- Malunion and nonunion of clavicle bone.

Features :

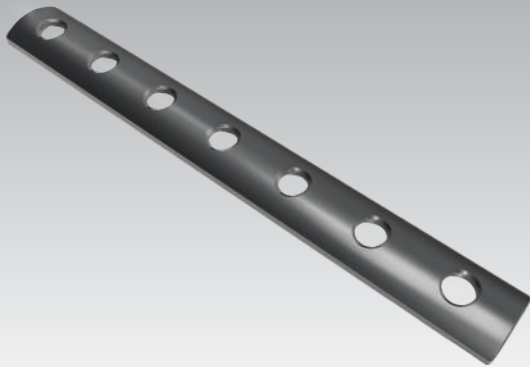
- 3.5 mm Cortex, 3.5 locking & 4.0 mm Cancellous can be used in plate shaft.
- Tapered tip for easy plate insertion.
- Grooves on the plates allow extended plate bending.
- Anatomical pre-bend plates with left and right options.
- 2.4 mm cortex and 2.7 mm locking screw can be used for six distal locking holes.



ASLP-2.7/3.5 mm superior anterior clavicle plate with lateral extension

PT104.03.01 Right angled Holes 3	PT104.03.02 Left angled Holes 3
PT104.04.01 Right angled Holes 4	PT104.04.02 Left angled Holes 4
PT104.05.01 Right angled Holes 5	PT104.05.02 Left angled Holes 5
PT104.06.01 Right angled Holes 6	PT104.06.02 Left angled Holes 6
PT104.07.01 Right angled Holes 7	PT104.07.02 Left angled Holes 7
PT104.08.01 Right angled Holes 8	PT104.08.02 Left angled Holes 8

ASLP™-3.5 Locking One-Third Tubular Plate



Indication:

- Commonly used for distal fibula fractures.
- Fractures of clavicle, radius-ulna & distal-ulna.
- It can also be used for olecranon fracture.

Features:

- The plate can be bend as per desire anatomy of the patient.
- The plate can be used for osteoporotic bone as it is facilitates.
- Locking screws which provides stable fixed angle fixation.

ASLP-3.5, Locking One-Third Tubular Plates

PT135.05	PT135.08
5 Holes	8 Holes

PT135.06	PT135.09
6 Holes	9 Holes

PT135.07	PT135.10
7 Holes	10 Holes

ASLP™-3.5 Proximal Humerus Plate



Indication:

- Intended used to fixation of fragmented fractures of the proximal humerus bone.
- Pseudarthrosis in the humerus bone.
- Osteotomies in the proximal humerus bone.

Features:

- There is provision of 9 proximal holes which accommodates 3.5 locking head screws to provide stability and grip the multi-fragment fractures even in osteoporotic bones.
- Small proximal holes for suturing to maintain fracture reduction.
- Undercuts on the plate head enables suturing conveniently.
- Elongated hole of the plate shaft area for easy plate adaptability.



ASLP-3.5, Proximal Humerus Plates

PT070.03	PT070.05
3 Holes	5 Holes

ASLP-3.5, Long Proximal Humerus Plates

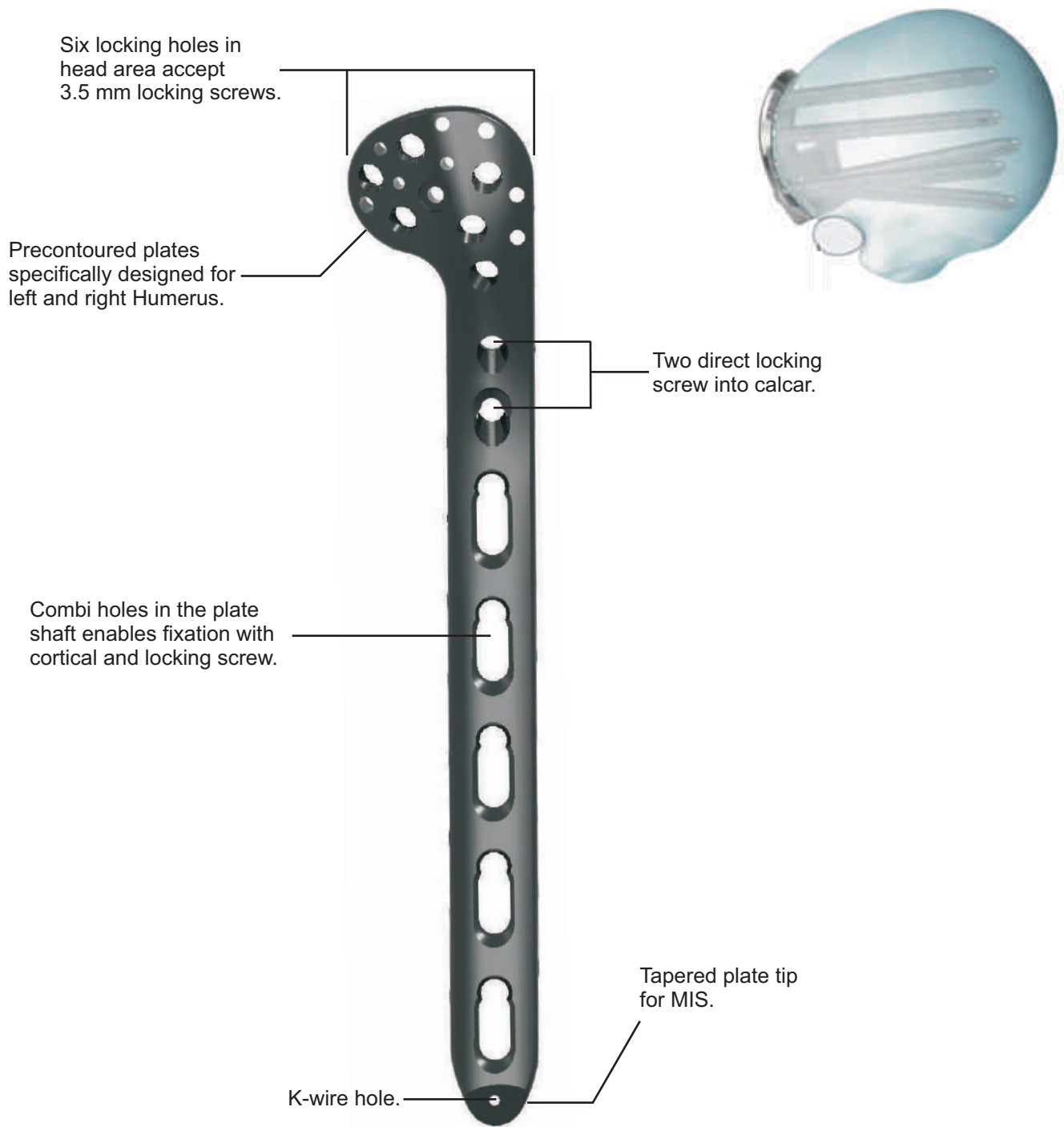
PT071.05	PT071.08	PT071.12
5 Holes	8 Holes	12 Holes

PT071.06	PT071.10
6 Holes	10 Holes

ASLP™ - 3.5

Periarticular Proximal Humerus Plate

- Plate can be fixed 10-15 mm distally from Rotator cuff to prevent acromial impingement.
- Low profile plate enables fixation without impinging soft tissue.
- Plate can be used in Osteopenic bone condition.



ASLP™ - 3.5

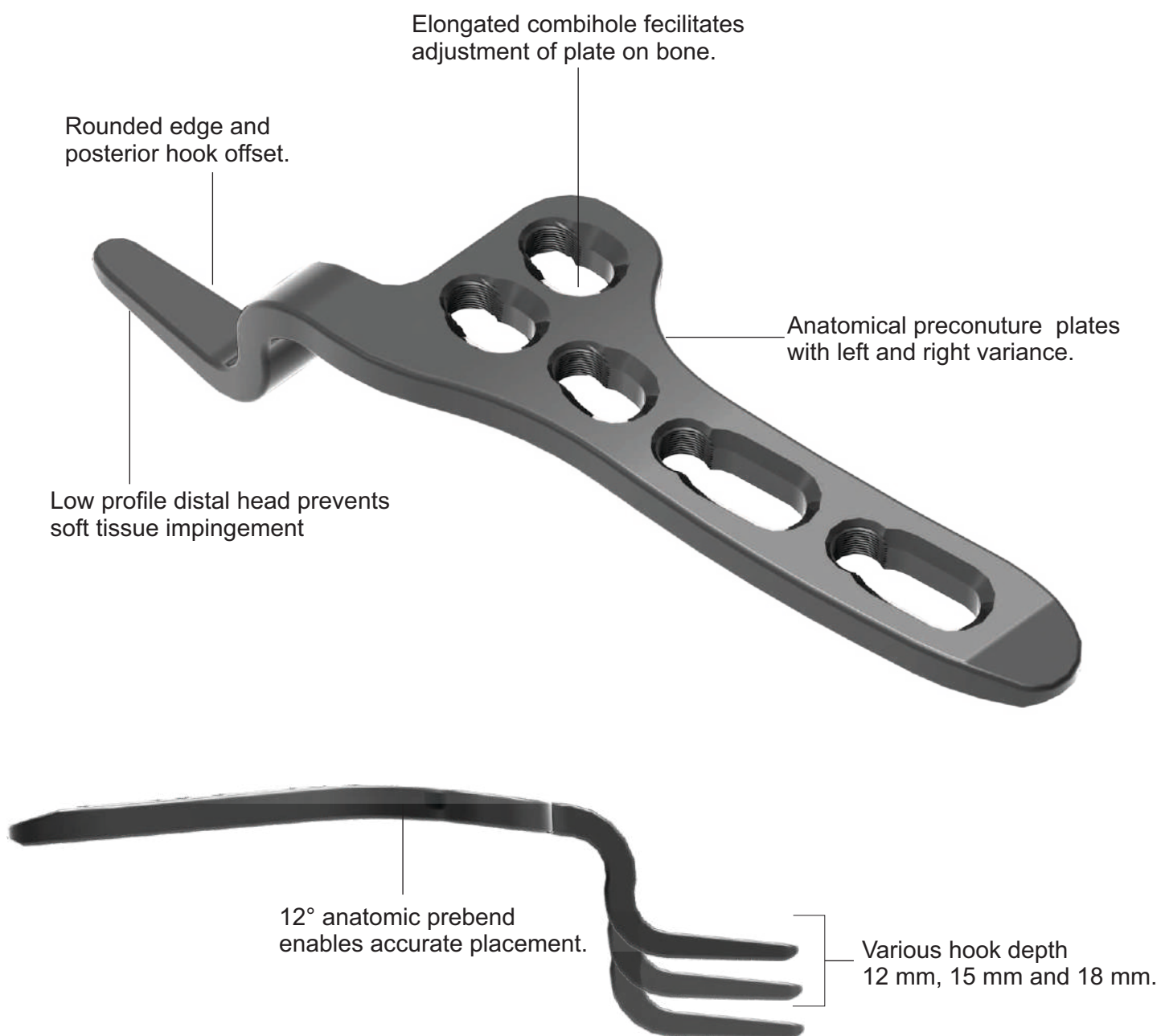
Periarticular Proximal Humerus Plate



ASLP - 3.5, Periarticular Proximal Humerus Plate

Titanium	Shaft holes	
PT068.02.01	2	Right
PT068.02.02	2	Left
PT068.03.01	3	Right
PT068.03.02	3	Left
PT068.04.01	4	Right
PT068.04.02	4	Left
PT068.05.01	5	Right
PT068.05.02	5	Left
PT068.06.01	6	Right
PT068.06.02	6	Left

ASLP™ - 3.5, Clavicle Hook Plates.



ASLP™ - 3.5, Clavicle Hook Plates.

ASLP - 3.5, Clavicle Hook Plates

Titanium	Shaft holes		Hook depth
PT120.12.04.1.12	4	right	12
PT120.12.04.2.12	4	left	12
PT120.12.04.1.15	4	right	15
PT120.12.04.2.15	4	left	15
PT120.12.04.1.18	4	right	18
PT120.12.04.2.18	4	left	18
PT120.12.05.1.12	5	right	12
PT120.12.05.2.12	5	left	12
PT120.12.05.1.15	5	right	15
PT120.12.05.2.15	5	left	15
PT120.12.05.1.18	5	right	18
PT120.12.05.2.18	5	left	18
PT120.12.06.1.12	6	right	12
PT120.12.06.2.12	6	left	12
PT120.12.06.1.15	6	right	15
PT120.12.06.2.15	6	left	15
PT120.12.06.1.18	6	right	18
PT120.12.06.2.18	6	left	18
PT120.12.07.1.12	7	right	12
PT120.12.07.2.12	7	left	12
PT120.12.07.1.15	7	right	15
PT120.12.07.2.15	7	left	15
PT120.12.07.1.18	7	right	18
PT120.12.07.2.18	7	left	18
PT120.12.08.1.12	8	right	12
PT120.12.08.2.12	8	left	12
PT120.12.08.1.15	8	right	15
PT120.12.08.2.15	8	left	15
PT120.12.08.1.18	8	right	18
PT120.12.08.2.18	8	left	18

