

ASLP™ - 4.5 / 5.0 Osteotomy Plating System

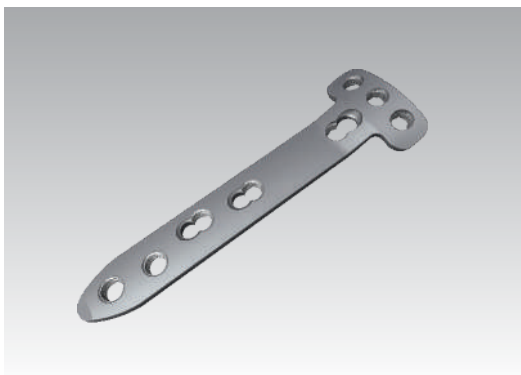


Indication:

- Intended used for open and closed wedge femur and tibia osteotomies.
- Treating fracture and malalignment due to injury and disease i.e osteoarthritis of medial-lateral femur bone and tibia bone.

Features :

- Anatomical pre-contoured plate manageable without any further bending leads to minimal soft tissue irritation.
- Elongated shaft distributes the direct forces in the femur and tibial bone shaft.
- Tapered plate tip enables easy plate insertion.
- Accommodates 4.5 mm cortex and 5.0 mm locking head screws.
- Spacers minimize the plate-bone interface and allow blood vascularization.



ASLP-4.5/5.0 Medial High Tibia Osteotomy Plate

PT147.04
Small | Holes 4

PT174.04
Small | 4 Holes



ASLP-4.5/5.0 Lateral High Tibia Osteotomy Plate

PT148.03.01
Right angled | Holes 3

PT148.03.02
Left angled | Holes 3



ASLP™ - 4.5 / 5.0 Osteotomy Plating System



**ASLP-4.5/5.0 Medial Distal
Femur 20° Osteotomy Plate**

PT176.20.04.01

Right angled | Holes 4

PT176.20.04.02

Left angled | Holes 4



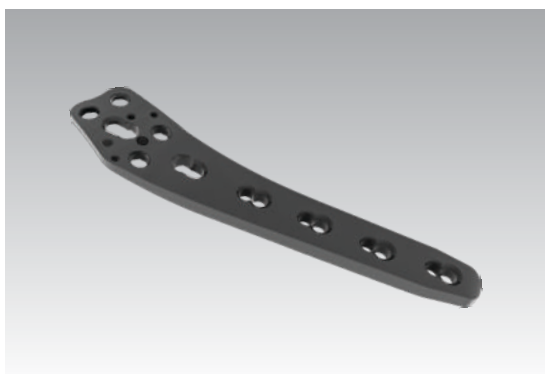
**ASLP-4.5/5.0 Medial Distal
Femur 29° Osteotomy Plate**

PT176.29.04.01

Right angled | Holes 4

PT176.29.04.02

Left angled | Holes 4



**ASLP-4.5/5.0 Lateral Distal
Femur Osteotomy Plate**

PT175.04.01

Right angled | Holes 4

PT175.04.02

Left angled | Holes 4



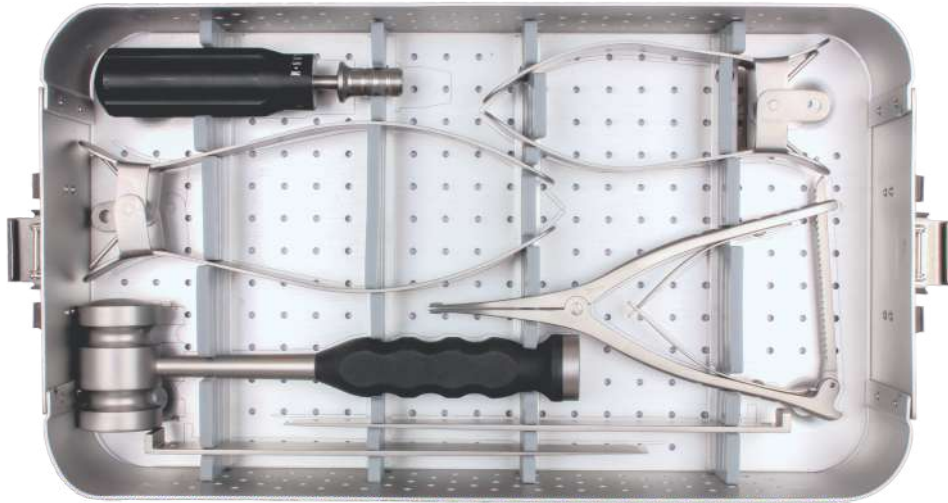
5.0 mm Spacer

Length 2 mm

| ST233.02



Instrument Set



Miraclus Orthotech Pvt. Ltd.

Corporate office :

B-513, Mondeal Square, Opp. Karnavati Club,
Pralahadnagar, Ahmedabad-380015

Plant address :

Plot No. 1112, Phase-3, G.I.D.C., Vatva, Ahmedabad - 382 445.
Phone : +91 79 2583 1332, 2583 1333
Email : contact@miraclus.com | www.miraclus.com