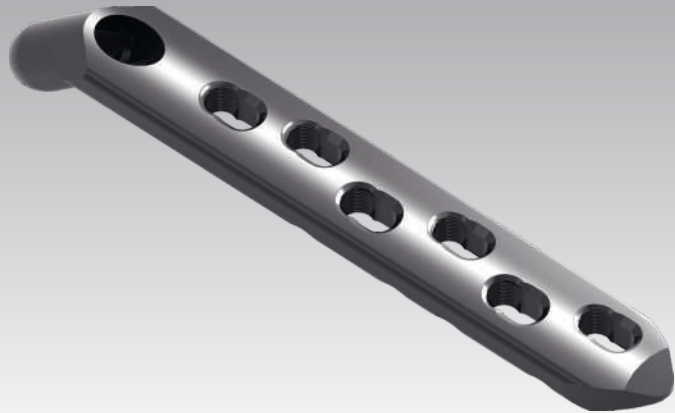


ASLP™-DHS Plate System



Indication:

- Indicated for fracture fixation of proximal femur:
 - (a) Intertrochantric fracture
 - (b) Subtrochantric fractures
 - (c) Basilar neck fracture
- For the stable and unstable fracture of proximal femur providing medial buttress support.

Features:

- Low profile design which prevents soft tissue irritation and trochanteric bursitis.
- Available in 135° angle with short and long barrels.
- 12.5 mm DHS lag screw easily glides on DHS plate enables control collapse and allows impaction of fragments.
- Accommodates 5.0 mm locking screws and 4.5 cortical screw.
- Over reaming can be restricted by locking nut of the triple reamer instrument.

ASLP DHS 135° Single Ended

(with Short barrel 25mm)

PT067.05.25	PT067.06.25
5 Holes	6 Holes

(with Long barrel 38mm)

PT067.02.38	PT067.03.38
2 Holes	3 Holes

PT067.04.38	PT067.05.38
4 Holes	5 Holes

PT067.06.38	PT067.08.38
6 Holes	8 Holes

PT067.10.38	PT067.12.38
10 Holes	12 Holes



DHS Screw

Length 60 to 115 mm (5 mm increment)
| ST038.60 to ST038.115

