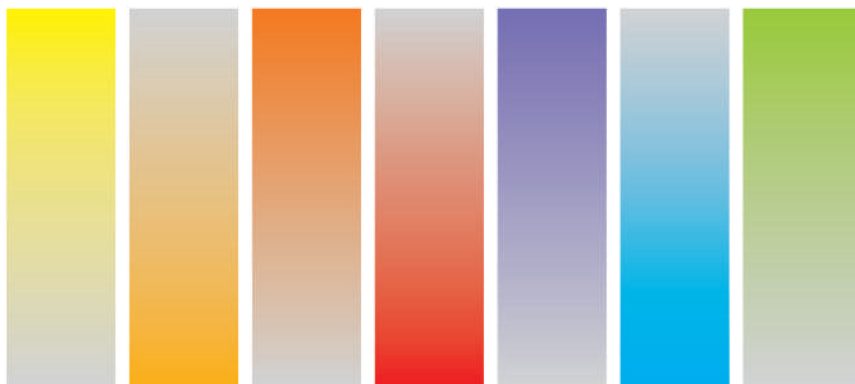
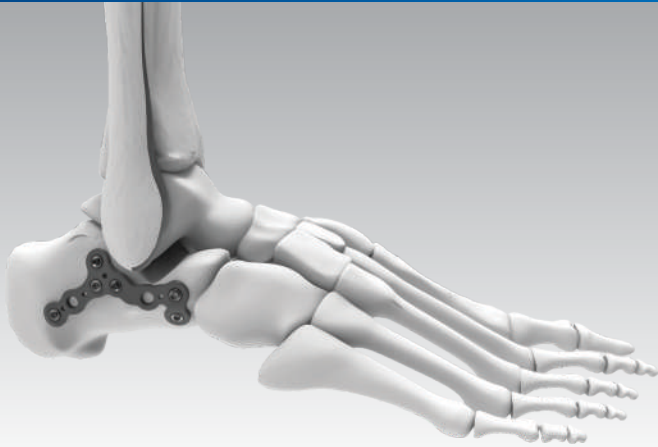


ASLP

3.5 Calcaneal Plating System



ASLP-3.5 MIS Calcaneal Plating System



Indication:

- Indicated for the treatment of calcaneal fractures with the Sinus tarsi approach.

Features:

- Enables fixation in minimally invasive approach with sinus tarsi incision.
- Rounded edges of the low profile plates enables minimal soft tissue irritation.
- Small incision makes easily visible the subtalar articular surface for easy anatomic reduction.
- MIS Calcaneal plates offers fragment specific solution by accommodating different types of fractures.
- MIS Calcaneal plates accommodate 3.5 locking screws.



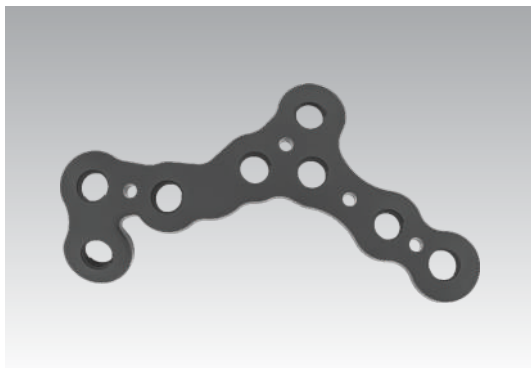
ASLP-3.5 MIS Anterior Calcaneal Plate

PT315.05.01
| **Right, Small**

PT315.05.02
| **Left, Small**

PT316.05.01
| **Right, Large**

PT316.05.02
| **Left, Large**



ASLP-3.5 MIS Anterior Calcaneal Plate With Extension

PT317.08.01
| **2 hole, Right, Small**

PT317.08.02
| **2 hole, Left, Small**

PT318.09.01
| **3 hole, Right, Large**

PT318.09.02
| **3 hole, Left, Large**



ASLP™-3.5 Calcaneal Locking Plate



Indication:

- Intended use for complex fracture of calcaneus.
- Osteotomies of the calcaneus.
- For comminuted fractures.

Features:

- Anatomically designed plate matches the lateral aspect of calcaneus.
- Low implant profile reduces soft tissue irritation.
- Screw holes can accommodate 3.5 mm locking, 3.5 mm cortex and 4.0 mm cancellous screws.

ASLP-3.5 Calcaneal locking plate

PT137.60.01 Right, L-60 mm	PT137.60.02 Left, L-60 mm
---------------------------------	--------------------------------

PT137.68.01 Right, L-68 mm	PT137.68.02 Left, L-68 mm
---------------------------------	--------------------------------