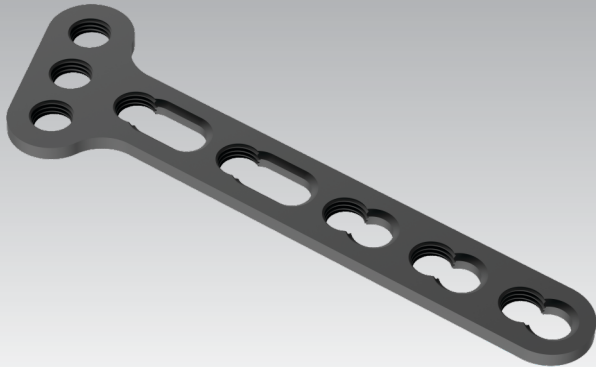


ASLP™ -3.5 T-Plates



Indication:

- Intended use for fixation of fractures of distal radius & tibia bone.

Features :

- Plates comprise of locking holes in the head and combi holes in the shaft.
- Available oblique anatomical plate in right and left option and right angled plate as universal design option.
- Available in titanium alloy.
- Locking holes in head of the plate accept 3.5 mm locking screws.
- Combi holes in the plate shaft enables fixation with 3.5 cortical and 3.5 locking screw.

3.5 T-Plate Oblique Angled (Titanium)

PT237.33.01

Right angled | Shaft Holes 3 | Head Holes 3

PT237.33.02

Left angled | Shaft Holes 3 | Head Holes 3

PT237.34.01

Right angled | Shaft Holes 4 | Head Holes 3

PT237.34.02

Left angled | Shaft Holes 4 | Head Holes 3

PT237.35.01

Right angled | Shaft Holes 5 | Head Holes 3

PT237.35.02

Left angled | Shaft Holes 5 | Head Holes 3

3.5 T-Plate Right Angled (Titanium)

PT236.33

Shaft Holes 3 | Head Holes 3

PT236.44

Shaft Holes 4 | Head Holes 4

PT236.35

Shaft Holes 5 | Head Holes 3

PT236.46

Shaft Holes 6 | Head Holes 4

