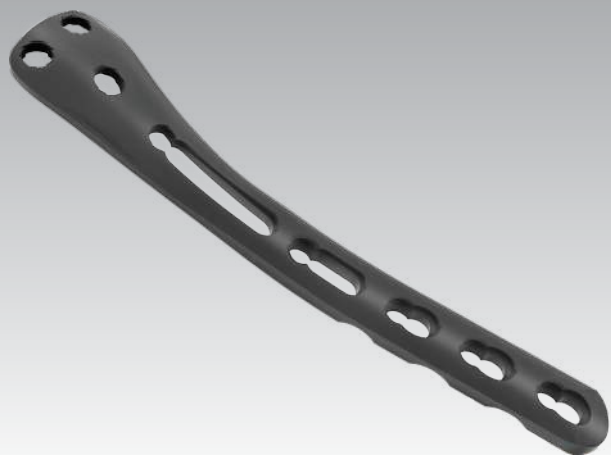


ASLP™-3.5 Posteromedial Proximal Tibia Plate



Indication:

- Intended use for fixation of posteromedial proximal tibia fractures.
- To provide buttressing support to the fractures of proximal, distal and metaphyseal region of the tibia bone.

Features:

- Low profile plate head.
- Combi holes allow locking or compression options.
- Elongated combi holes in the neck and shaft facilitate plate adjustment and allow locking or compression options.
- Limited contact surface reduces bone to plate contact and helps to preserve the periosteal blood supply.

ASLP-3.5 Posteromedial proximal tibia plate

PT091.01
| 1 Hole

PT091.02
| 2 Holes

PT091.04
| 4 Holes

PT091.06
| 6 Holes

PT091.08
| 8 Holes

PT091.10
| 10 Holes