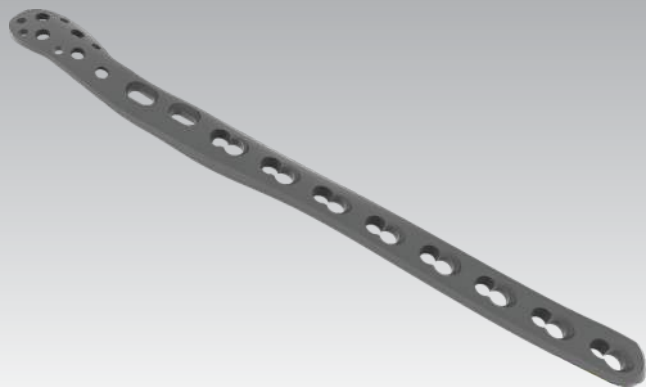


ASLP™ - 2.7 / 3.5 Distal Fibula Plate



ASLP-2.7/3.5 Distal fibula plate

PT153.04.01
Right angled | Holes 4

PT153.06.01
Right angled | Holes 6

PT153.08.01
Right angled | Holes 8

PT153.10.01
Right angled | Holes 10

PT153.04.02
Left angled | Holes 4

PT153.06.02
Left angled | Holes 6

PT153.08.02
Left angled | Holes 8

PT153.10.02
Left angled | Holes 10

Indication:

- Comminuted fractures.
- Supracondylar fractures.
- Intra-articular and extra-articular condylar fractures.
- Fractures in osteopenic bone.
- Nonunions.
- Malunions.

Features :

- 2.7 mm locking screw can be used for five distal locking holes.
- Pre-contoured distal fibula plate matching various anatomical geometry.
- Fixed angle construct of locking screws provides stable fixation even in osteoporotic bone.
- 3.5 mm cortex screw, 3.5 locking screw & 4.0 mm cancellous screw can be used in plate shaft.
- Two hole in the neck accommodate 2.7 mm cortex screw.