

ASLP™ - 2.4/2.7 Proximal Radius Head Plate



Indication:

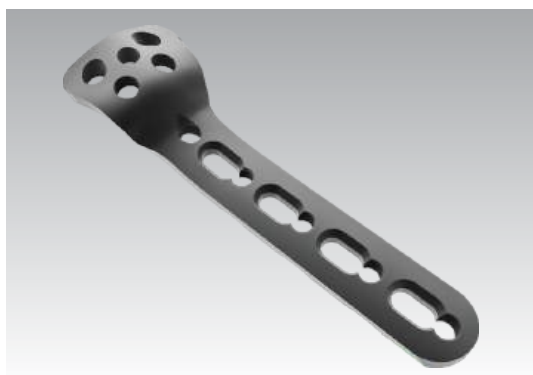
- For treating extra-articular and intra-articular fractures of the proximal radius and multi fragmented radial neck fracture.

Features:

- Pre-contoured anatomical plates.
- Plates available in 2,3 and 4 hole alternatives.
- Accommodates 2.4 locking head screw and either 2.4mm and 2.7mm cortex screws.
- Radial head rim plates available as right and left forms with 5° tilt to best match the anatomy.

ASLP - 2.4/2.7 Proximal Radius Head Neck Plate

PT139.02	PT139.03	PT139.04
Shaft Holes 2	Shaft Holes 3	Shaft Holes 4



ASLP - 2.4/2.7 Proximal Radius Head Rim Plate

PT138.02.01	PT138.02.02
Right angled Shaft Holes 2	Left angled Shaft Holes 2
PT138.03.01	PT138.03.02
Right angled Shaft Holes 3	Left angled Shaft Holes 3
PT138.04.01	PT138.04.02
Right angled Shaft Holes 4	Left angled Shaft Holes 4



2.4 mm Locking Screw Self-Tapping

ST030.10 - L 10mm	ST030.24 - L 24mm
ST030.12 - L 12mm	ST030.26 - L 26mm
ST030.14 - L 14mm	ST030.28 - L 28mm
ST030.16 - L 16mm	ST030.30 - L 30mm
ST030.18 - L 18mm	ST030.35 - L 35mm
ST030.20 - L 20mm	ST030.40 - L 40mm
ST030.22 - L 22mm	



2.4 mm Cortex Screw Self-Tapping

ST127.12 - L 12mm	ST127.22 - L 22mm
ST127.14 - L 14mm	ST127.24 - L 24mm
ST127.16 - L 16mm	ST127.26 - L 26mm
ST127.18 - L 18mm	ST127.28 - L 28mm
ST127.20 - L 20mm	ST127.30 - L 30mm



2.7 mm Cortex Screw Self-Tapping

ST128.12 - L 12mm	ST128.22 - L 22mm
ST128.14 - L 14mm	ST128.24 - L 24mm
ST128.16 - L 16mm	ST128.26 - L 26mm
ST128.18 - L 18mm	ST128.28 - L 28mm
ST128.20 - L 20mm	ST128.30 - L 30mm

