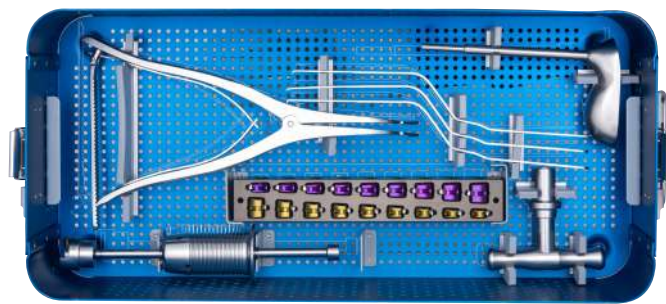
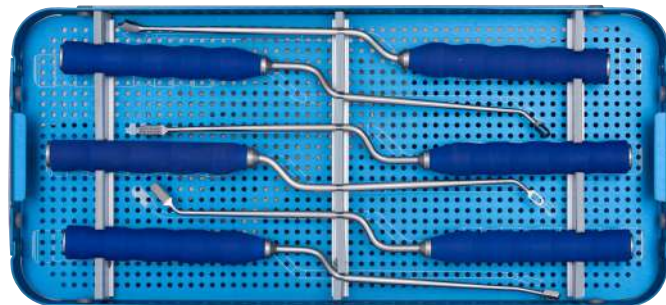
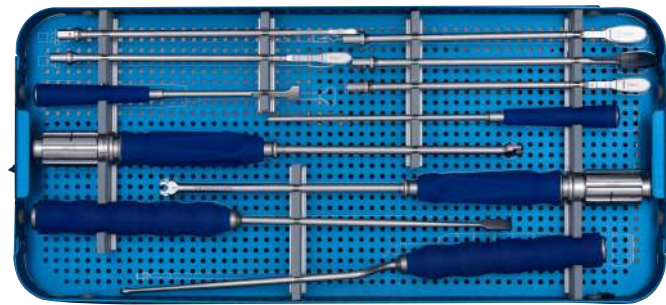


ALC™ -II TLIF Cage

Instrument Set



ALC™ -II TLIF Cage



A comprehensive system for
Transforaminal **L**umbar **I**nterbody **F**usion.

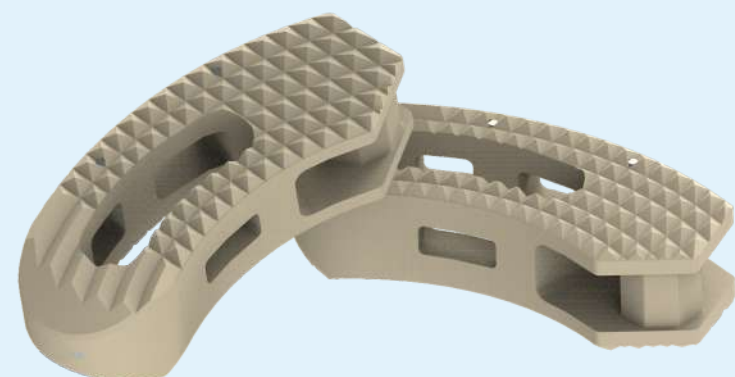
Miraclus Orthotech Pvt. Ltd.

Plant address :
Plot No. 1112, Phase-3, G.I.D.C., Vatva, Ahmedabad - 382 445.
Phone : +91 79 2583 1332, 2583 1333
Email : contact@miraclus.com | www.miraclus.com

Plant - II address :
Survey no 106, village vavdi, opp safex industries
Bh elite boarding school, vavdi, ta kheda-387550

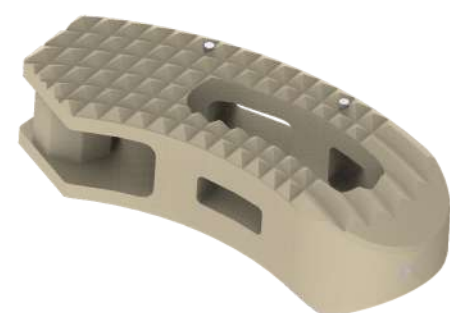
ALC™ -II TLIF Cage

EFFORTLESS & SAFE

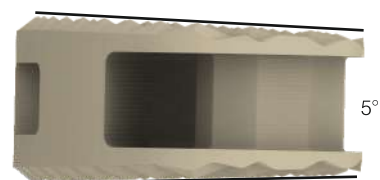


Indications

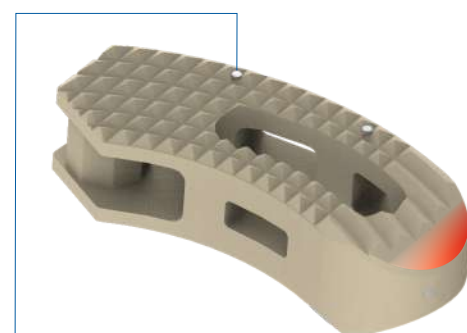
- Advanced discopathies
- Extensive decompression
- Spondylolisthesis
- Failed disc surgery
- Re-current disc herniation
- Post-operative instability
- Lumbar pseudarthrosis



- Large graft area allows substantial bone growth.
- Anterior and posterior side holes enables graft vascularization.



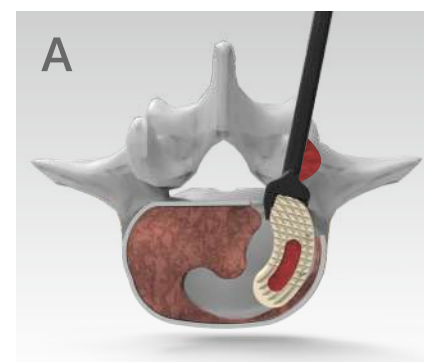
- Lordotic angle 5° (except for the 7 mm height)



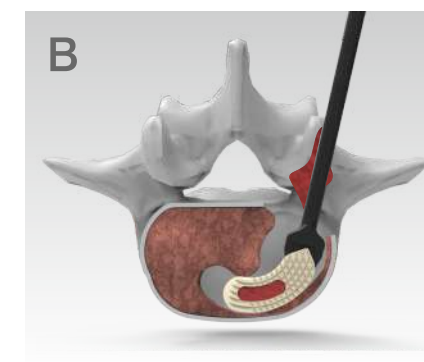
- Tantalum marker for clear radiographic implant placement.
- Tapered tip facilitates easy insertion.

ALC™ -II TLIF Cage

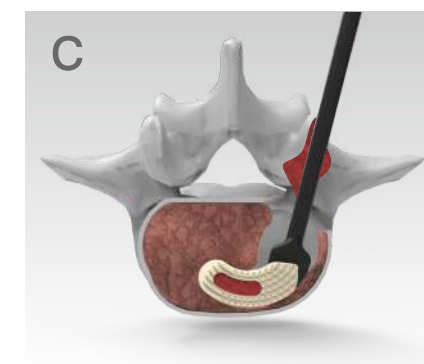
TLIF Cage Insertion



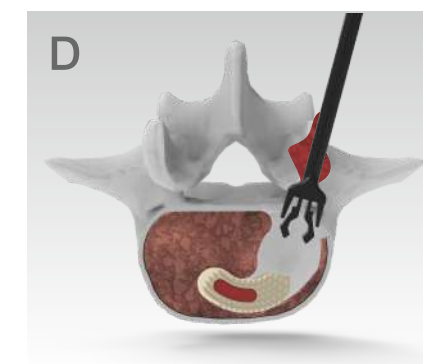
The cage introduced straight into the intervertebral space.



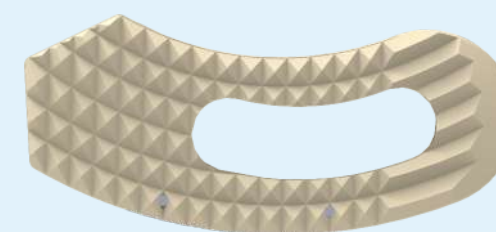
Incline the introducer laterally a few degrees to incline the cage.



Unscrew the introducer to recover initial position of the introducer and lock it again.



The cage insertion in the intervertebral space continues till the accurate position is achieved.



- PEEK-VESTAKEEP® material for biocompatibility and radiolucency.

Sizes :

Material	Width	Height (mm)
PEEK	28	7, 8, 9, 10, 11, 12, 13, 14
Titanium	28	7, 8, 9, 10, 11, 12, 13, 14